

Hui A Iwi Update on RoMST Activities



CONTENTS

- Summary of Activities to Date;
- RoMST Communication Plan;
- RoMST Work Programme;
- RoMST Tohu;
- RoMST Website;
- RoMST Elections 2017; and
- RoMST Election Timetable.



Summary of Activities to Date

- The Trust is now meeting six-weekly;
- Have been implementing Work Programme;
- Communication Plan finalised;
- Iwi Registration Form finalised;
- Ongoing development of Commercial Structures;
- Overseeing on-going Settlement implementation matters; and
- Provided sponsorship to Rangitāne Ahurei.



RoM Settlement Trust Draft Communication Plan

- Seeks to be flexible/repsonsive to beneficiaries;
- Purpose – Ensure RoM beneficiary expectations are being managed and communicated effectively/Trust is transparent;
- Sets out how Trust will communicate with beneficiaries eg. Hui, Newsletters, Website, Iwi Radio, Email etc;
- Aims to build a strong/positive relationship with beneficiaries;
- Foster participation by beneficiaries in RoM Activities; and
- Agreed strategy of engagement with beneficiaries.

RoMST Work Programme 16/17

- Strategic Plan being presented tonight;
- Annual Plan being presented tonight;
- AGM was held in December 2016;
- 2017 AGM is Sunday the 17th December at 10.00am;
- Tohu finalised so website can be finalised now;
- On-going engagement with Deloittes;
- Meetings with Directors of Commercial Arm;
- Letter of Expectation provided to Commercial Arm; and
- Meeting with DoC as required.



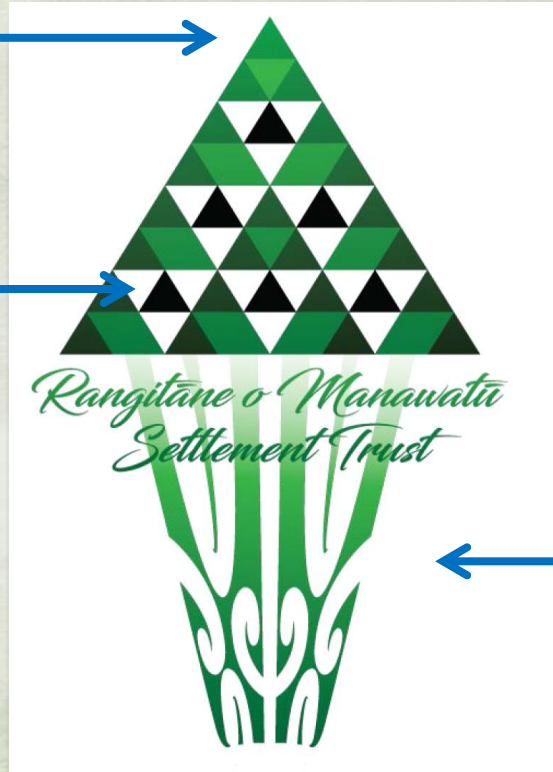
RoMST Tohu

Te Ahu a Turanga

Waitangi Grievances, settlement process, remembering our history and taking that knowledge forward with future generations.

6 Hapu

Represented by the 6 central triangles
Hineaute
Rangitepaia
Kapuarangi
Taura
Mairehau
Rangiaranaki



Kauae Tehe Design

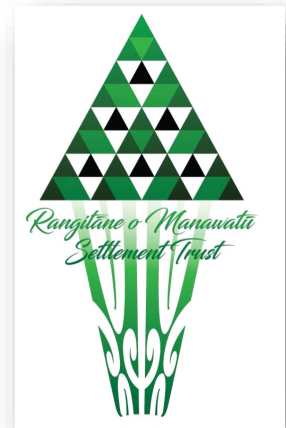
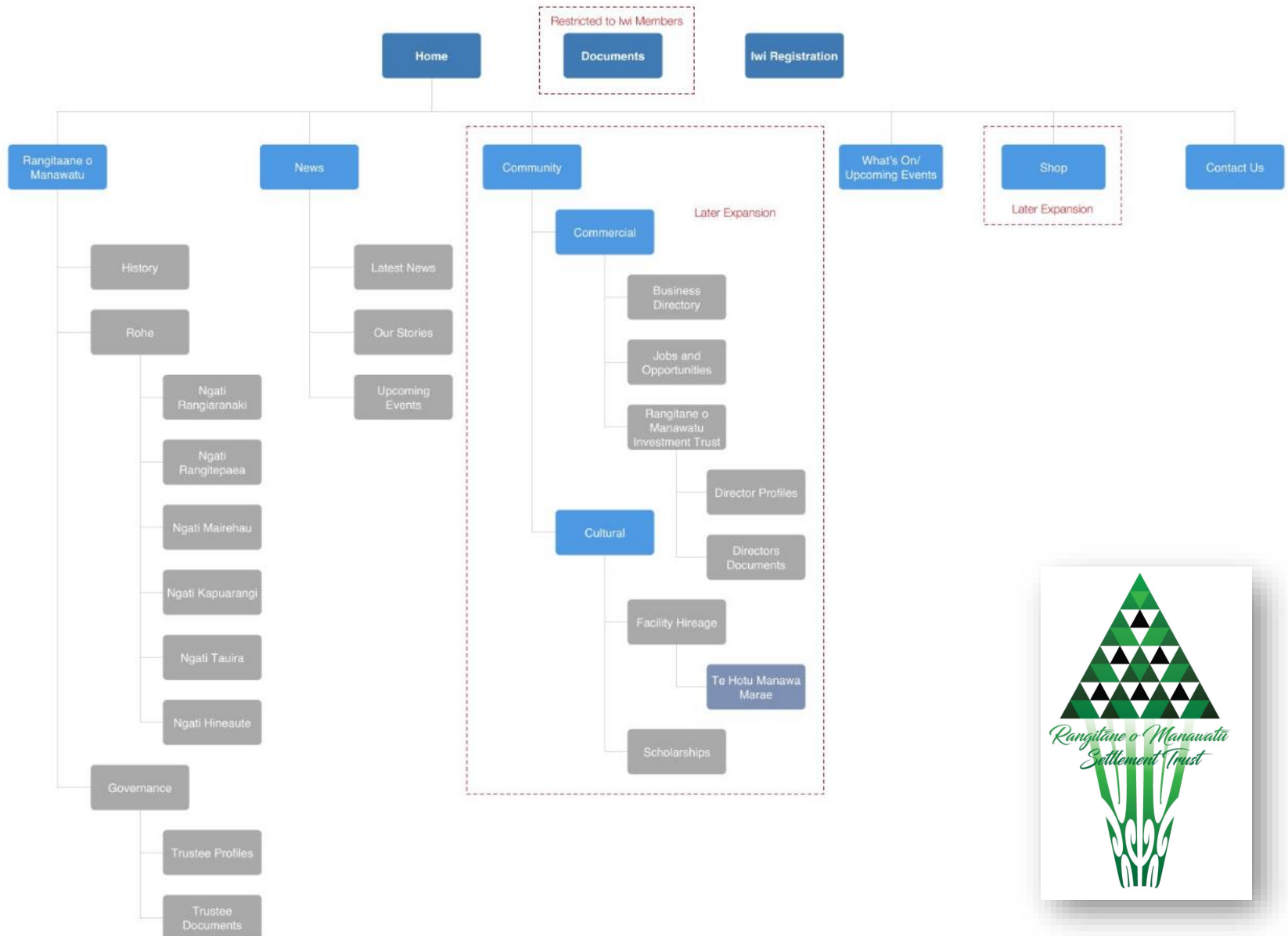
The descending moko kauae pattern speaks about the rarity of the large amount of Mana wahine representation seen in our hapu/whakapapa, kauae tehe incorporate 3 manaia figures 2 facing outward while coming together to create a full frontal profile. The word Manaia a carving figure is a guardian that crosses from the Te Ao Wairua (spiritual world) to the Te Ao Marama (human world) which means, the use of the causative prefix 'whaka' with Manaia = Whakamanaia means to instil mana. The kauae stands as the mouth piece of our ancestors, our tribal narratives that have been handed down through oral traditions.

Aronui/Aonui taniko pattern

A Triangular pattern, this word means love and peace that benefits the Earth and all living things – one of the baskets of knowledge. This basket related to knowledge acquired through observation of the environment. It is also the basket of ritual, of literature, philosophy and is sometimes regarded as the basket of humanities.

Artist: Ephraim Russell

RoMST Website



RoMST Trustee Elections

- Three Trustees are required to step down this year and the remaining three in 2018;
- This year the following will be stepping down:
 - Deputy Chair, Terry Hapi Ngati Rangitepaia;
 - Hohepa Isaac Sharland Ngati Mairehau; and
 - Chris Whaiapu Ngati Kapuarangi
- Thus elections will be held for these three vacancies;
- Current Trustees are eligible to stand again; and
- Independent Election Services will be managing the elections.

RoMST Trustee Election Timetable

- Monday 28 August 2017 Email/Post to members Notice of Election;
- Saturday 2 – Tuesday 5 September 2017 Public Notice of Elections in newspapers;
- Monday 4 September 2017 Nominations open;
- Friday 6 October 2017 Nominations close 5.00pm;
Close of register for members to register 5.00pm;
- Saturday 21 – Tuesday 24 October 2017 Post to members, voting packs. Public Notice of Day of Election in newspapers and by radio;
- Tuesday 24 October 2017 Voting opens;
- Tuesday 28 November 2017 Voting closes 5.00pm
- Friday 1 December 2017 Close of valid postmarked votes;
Membership Validation Committee validates any new Registrations if required;
- Wednesday 6 December 2017 Results advised to Trust;and
- Sunday 17 December 2017 Results announced at AGM.

